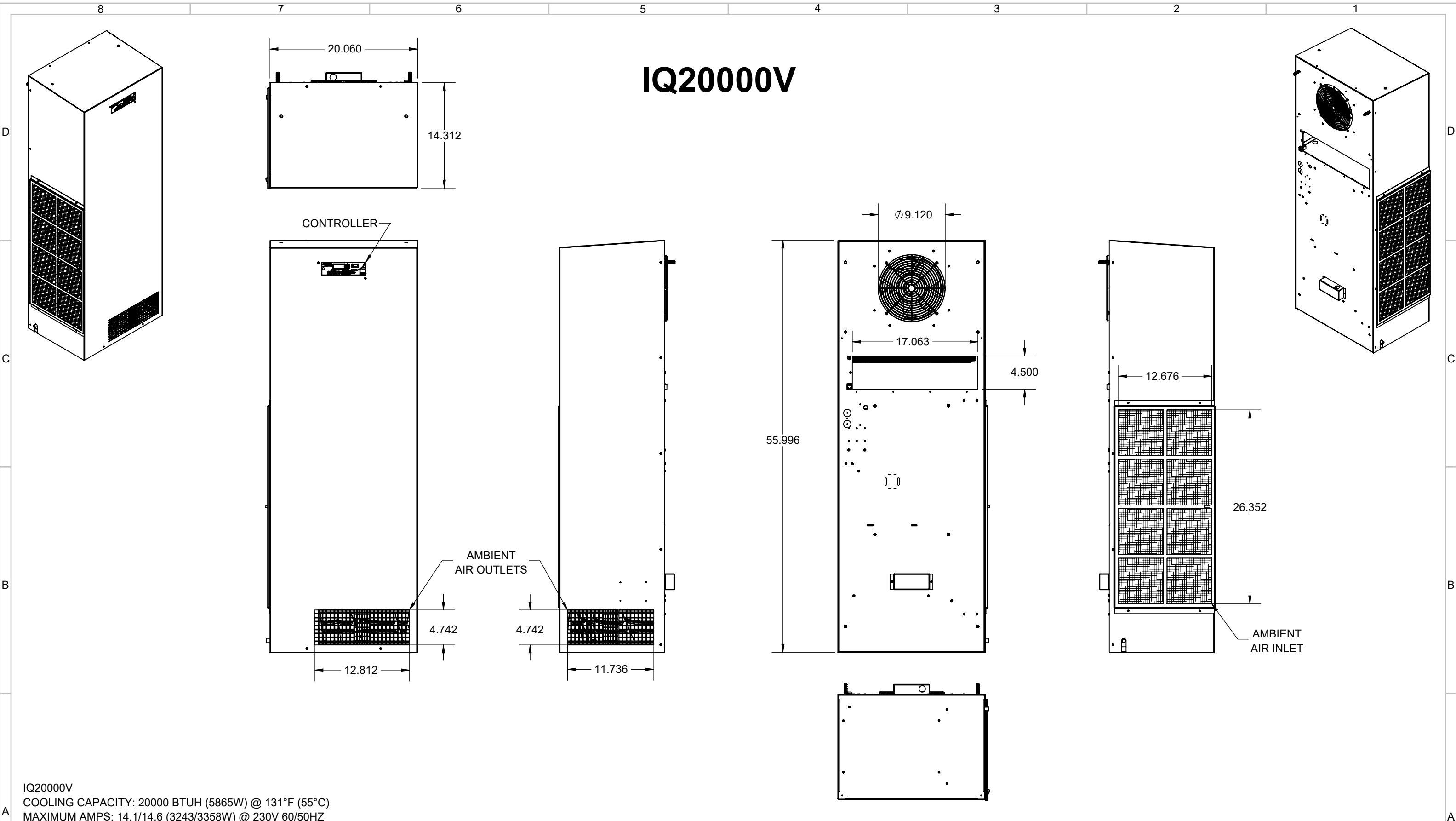


IQ20000V



IQ20000V
 COOLING CAPACITY: 20000 BTUH (5865W) @ 131°F (55°C)
 MAXIMUM AMPS: 14.1/14.6 (3243/3358W) @ 230V 60/50HZ
 MAXIMUM AMPS: 6.8/7.5 (3264/3600W) @ 480V 60/50HZ
 MAXIMUM OPERATING TEMP: 131°F (55°C)
 MINIMUM OPERATING TEMP: -40°F (-40°C)
 DIMENSIONS: 56.00" (1422MM) H X 20.06" (510MM) W X 14.31" (364MM) D
 WEIGHT: 200LB (90.72KG) @ 230V
 WEIGHT: 252LB (114.3KG) @ 480V

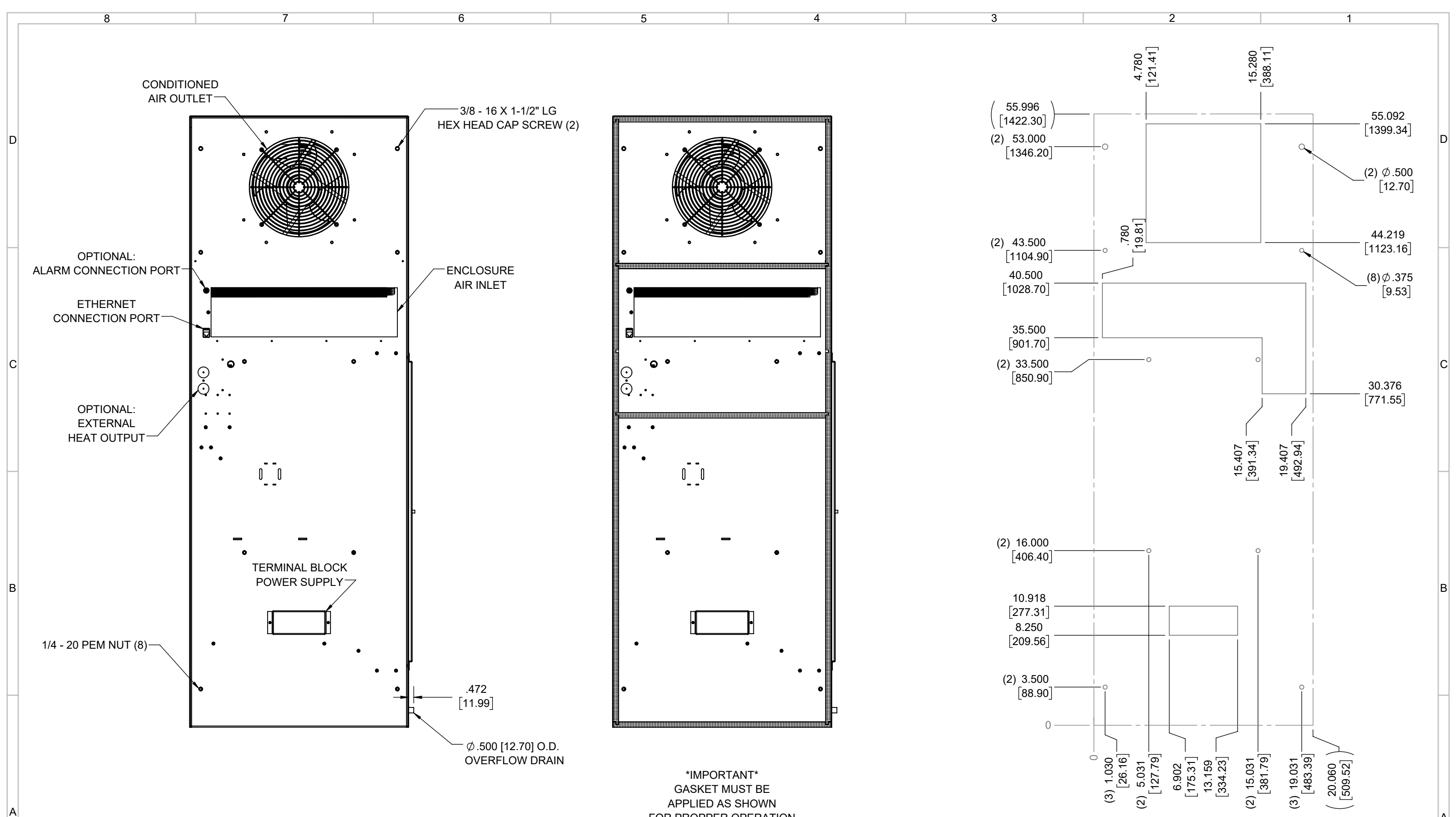
REV	DESCRIPTION	CHG	DATE	APP	DATE	CN #
A	INITIAL DRAFT	NAT	2/10/2020			

ITEM NUMBER	N/A
MATERIAL	N/A
EST WT:	lbs
DRAWN BY	NAT

USED ON	IQ20000V
DATE	2/3/2020
SCALE	1:12

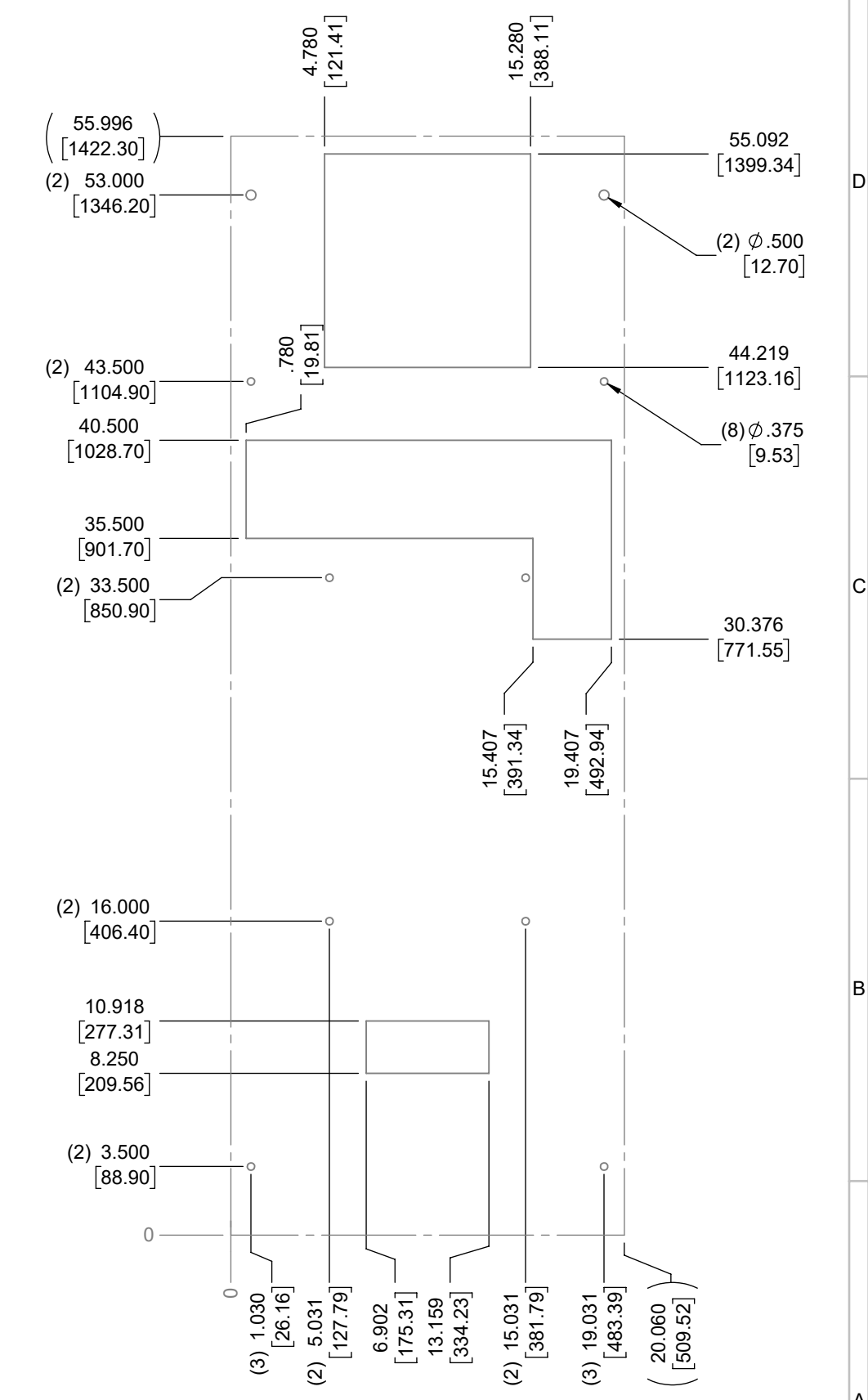
UNLESS OTHERWISE SPECIFIED TOLERANCES	
.X	±.060
.XX	±.030
.XXX	±.015
FRACTIONAL	±1/16
ANGULAR	±1/2°
SURFACE FINISH $\sqrt{63}$	
DO NOT SCALE DRAWING DIMENSIONS ARE INCHES	

ICE QUBE, INC.
THIS IS A PROPRIETARY DOCUMENT. DO NOT REPRODUCE OR DISCLOSE WITHOUT THE EXPRESS WRITTEN PERMISSION OF ICE QUBE, INC.
 DESCRIPTION
SPEC DRAWING
 DRAWING NUMBER
IQ352308
 REV
A



EVAP. OUTLET ≈ 680 CFM
 COND. OUTLET ≈ 1200 CFM
 SOUND LEVEL @5FT FROM UNIT @ A HT. OF 3FT = 65dBA
 SOUND LEVEL @2FT FROM UNIT @ A HT. OF 5FT = 70dBA
 CONDENSER INLET MIN. CLEARANCE 4.55"

IMPORTANT
 GASKET MUST BE
 APPLIED AS SHOWN
 FOR PROPER OPERATION
 AND TO MAINTAIN
 NEMA INTEGRITY.



ITEM NUMBER N/A	USED ON	UNLESS OTHERWISE SPECIFIED TOLERANCES X ±.060 .XX ±.030 .XXX ±.015 FRACTIONAL ±1/4 ANGULAR ±1/2°	<p>THIS IS A PROPRIETARY DOCUMENT. DO NOT REPRODUCE OR DISCLOSE WITHOUT THE EXPRESS WRITTEN PERMISSION OF ICE QUBE, INC.</p>
MATERIAL N/A			
EST WT: lbs	SCALE 1:12	SURFACE FINISH 63	DRAWING NUMBER
DRAWN BY NATRCC	DATE 4/7/2017	DO NOT SCALE DRAWING DIMENSIONS ARE INCHES	REV